



City of Rohnert Park

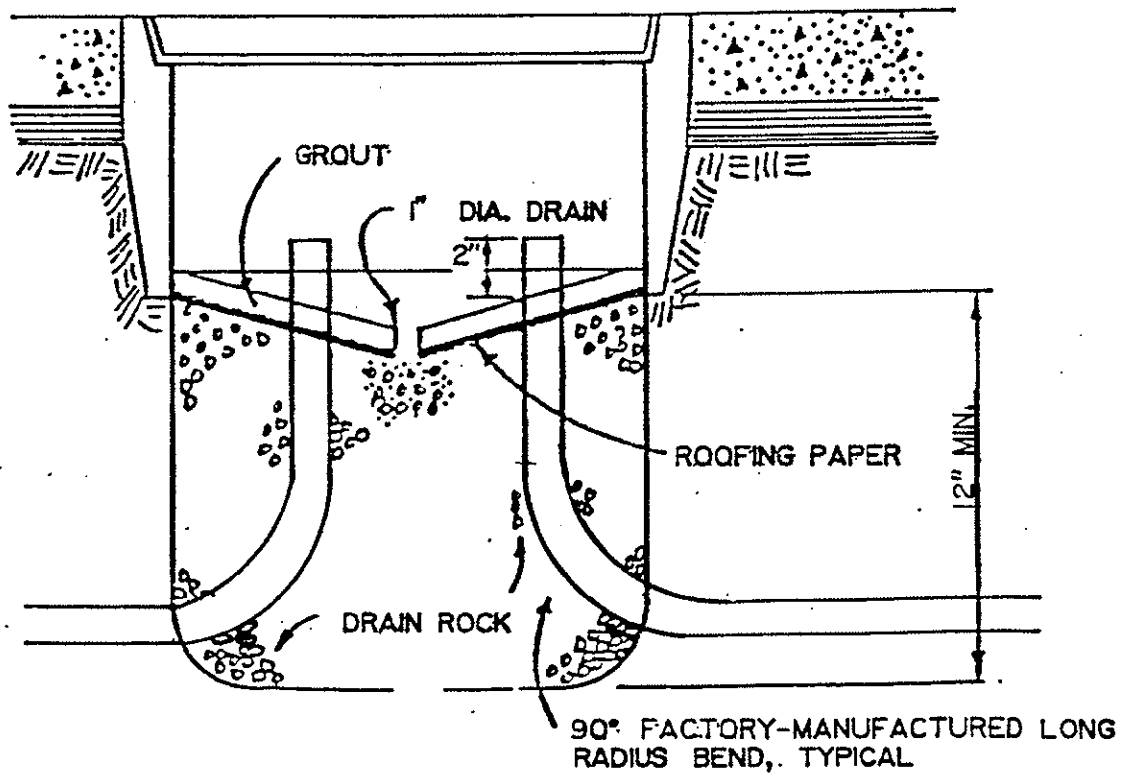
# Street Lighting Detail Drawings



## STREET LIGHTING DETAIL DRAWINGS

<u>Standard Number</u>	<u>Title</u>	<u>Date Approved</u>
<b>600 Series</b>		
601	Pull Box Installation	2006
602	Street Light Standard Wiring Diagram	2006
603A	Electrical Service Detail – Underground Service	2006
603B	Reserved	2014
604	Lateral Light Distribution	2006
<b>Poles</b>		
610	Street Lights – Major Streets	2014
611	Street Lights – Collector Streets	2014
612	Street Lights – Minor Streets	2014
613	Reserved	2006
614	Reserved	2014
615	Reserved	2014
616	Reserved	2006
617	Reserved	2014
618	Decorative Street Lights City Center Area	2006
<b>Bases and Trenching</b>		
620A	Concrete Footing & Base Detail – Cobra Style Street Light Pole	2014
620B	Concrete Footing & Base Detail – Decorative Street Light Pole	2014
620C	RESERVED	
621	Street Light Base Leveling Detail	2006
625	Joint Trench Layout for Street Light Conduit	2006





### NO. 5 CONCRETE PULLBOX.

#### NOTES:

- I. PULLBOX COVERS SHALL BE BOLTED AND INSCRIBED "STREET LIGHTING".

## CITY OF ROHNERT PARK

### PULL BOX INSTALLATION NO. 5 PULL BOX

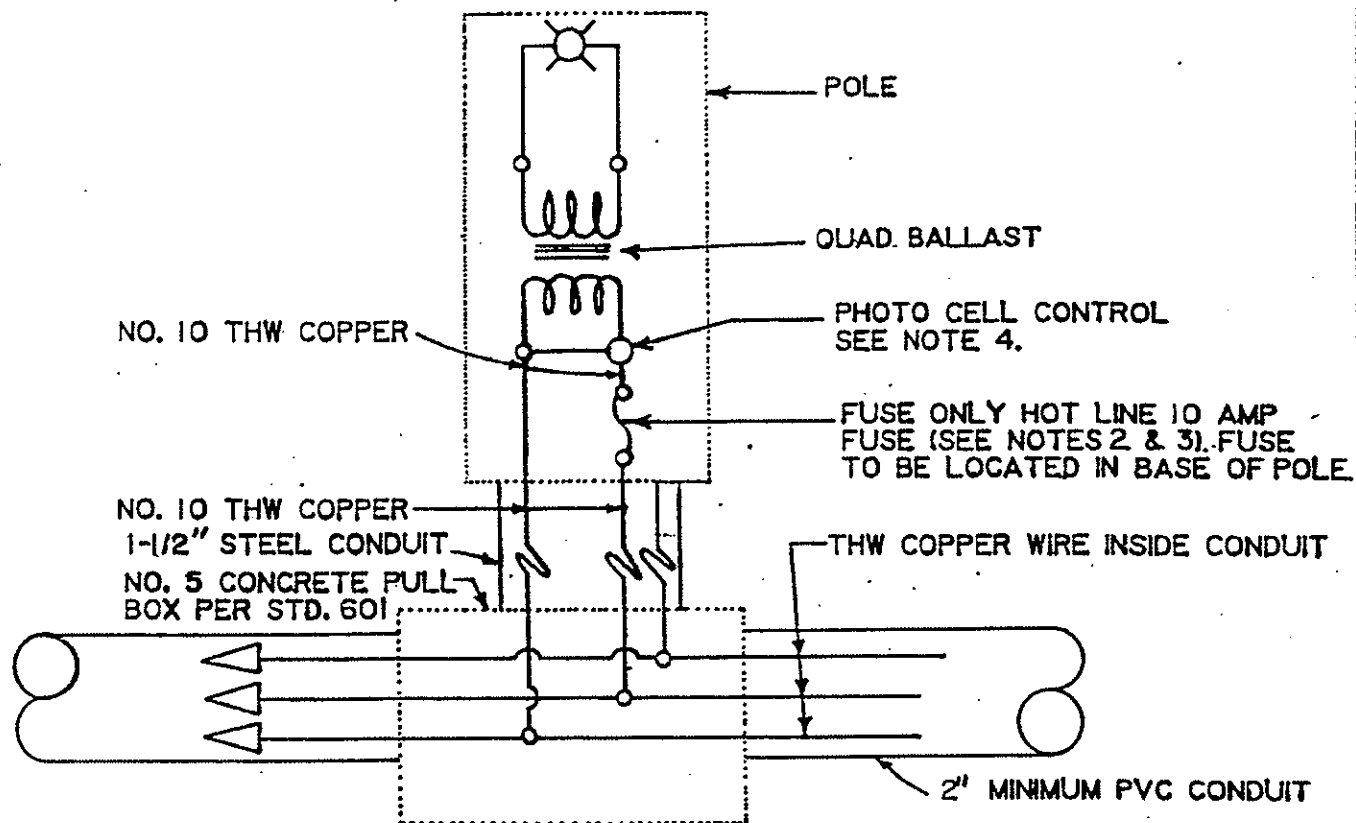
SCALE: NONE

DATE: JANUARY 2006

Approved:

*Damian*

STD. - 601



**SCHEMATIC STREET LIGHT  
WIRING DIAGRAM**

**NOTES:**

- 1.** 600V 30A IN-LINE WATERPROOF FUSE HOLDER SHALL BE USED.
- 2.** IF THE OPTIONAL DECORATIVE LUMINAIRE PER STD. 613 IS USED, THE IN-LINE FUSE SHALL BE LOCATED IN THE ADJACENT PULL BOX.

**CITY OF ROHNERT PARK**

**STREET LIGHT  
STANDARD WIRING DIAGRAM**

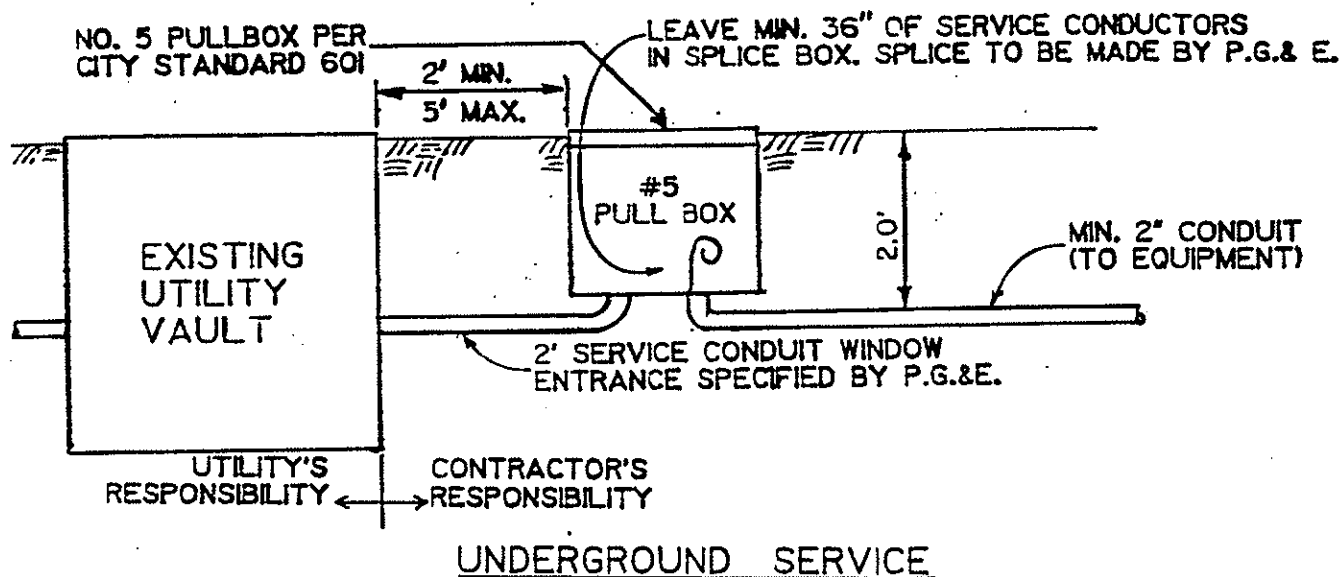
SCALE: NONE

DATE: JANUARY 2006

Approved:

*Dan Sullivan*

**STD. - 602**



#### NOTES:

1. CONTRACTOR TO INSTALL CONDUIT INTO UTILITY CO. VAULT WITH UTILITY CO. REPRESENTATIVE IN ATTENDANCE.
2. CONTRACTOR TO INSTALL #5 PULL BOX AND 2" SERVICE CONDUIT (WHEN NONEXISTENT) AND 2" CONDUIT AND CONDUCTORS FROM EQUIPMENT TO PULL BOX.
3. CONDUIT AND CONDUCTOR SPLICE BOX ON SHORT SIDE. NO LONG SIDE OR BOTTOM ENTRY PERMITTED.

## CITY OF ROHNERT PARK

### ELECTRIC SERVICE DETAIL UNDERGROUND SERVICE

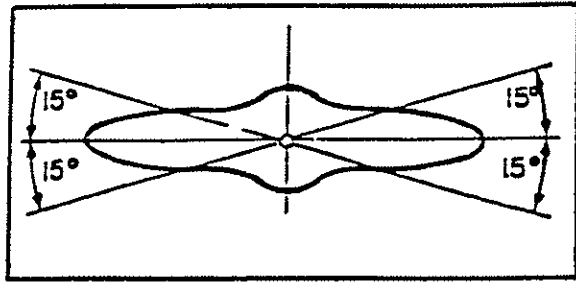
SCALE: NONE

DATE: JANUARY 2006

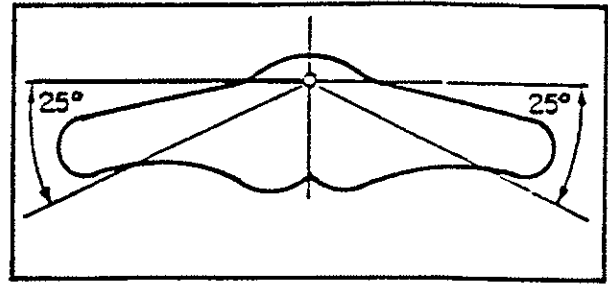
Approved:

*[Signature]*

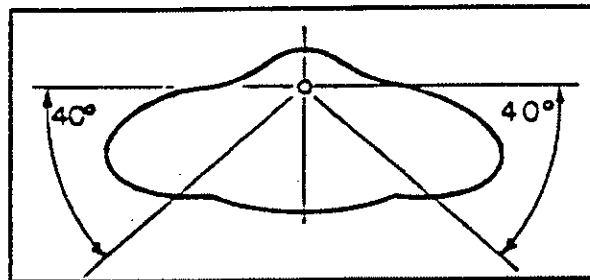
STD. - 603A



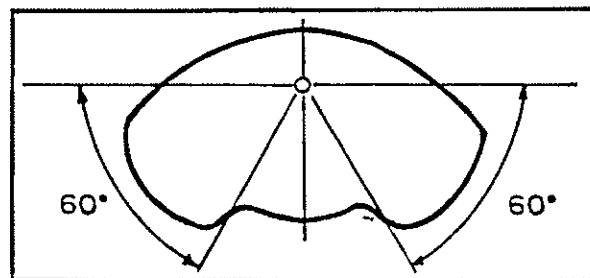
TYPE 1  
CENTER OF STREET



TYPE 2  
SIDE OF STREET



TYPE 3  
SIDE OF STREET



TYPE 4  
SIDE OF STREET

# CITY OF ROHNERT PARK

## LATERAL LIGHT DISTRIBUTION

SCALE: NONE

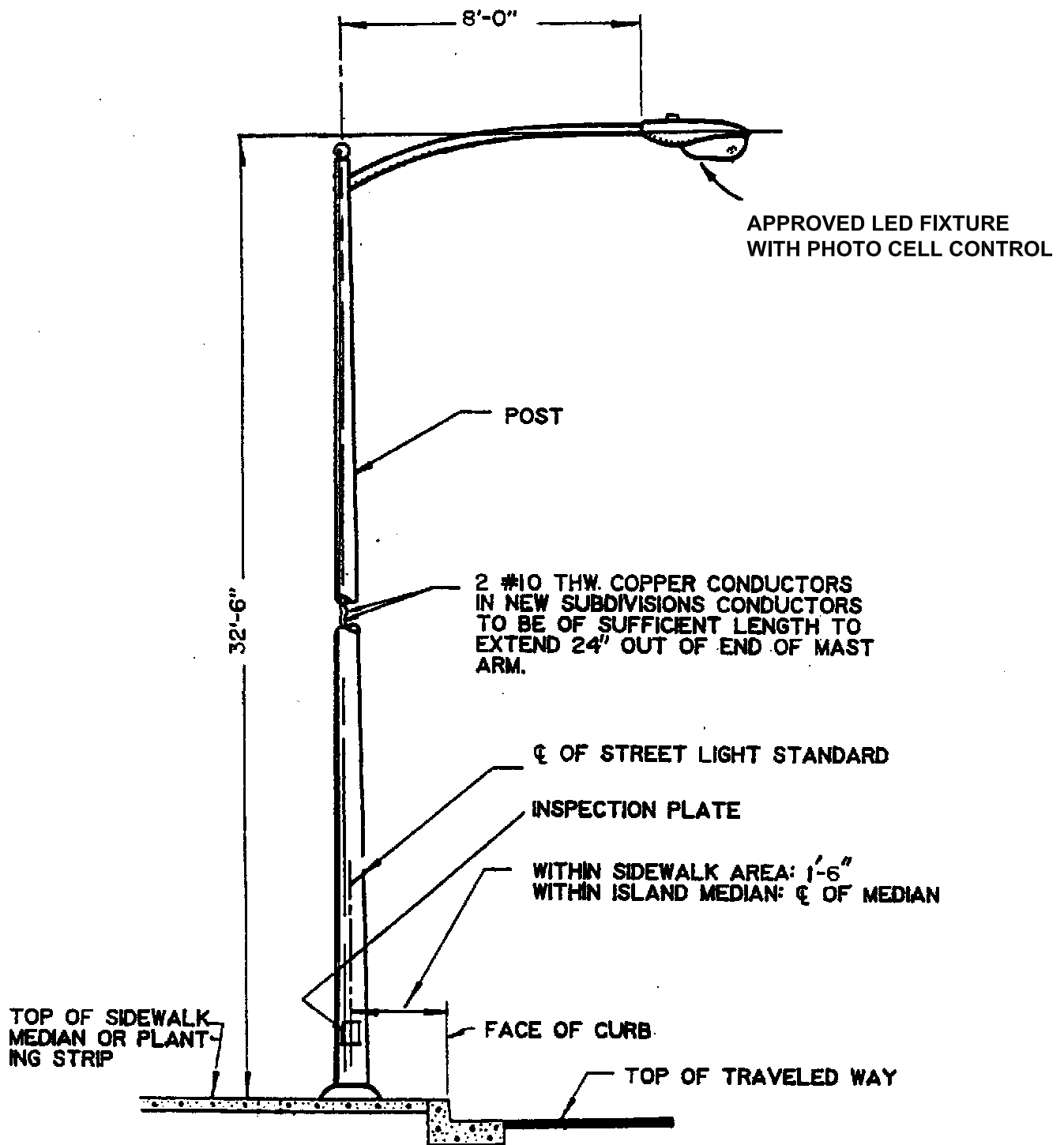
DATE: JANUARY 2006

Approved:

*Domestic*

STD. - 604





# **NOTES:**

1. FOR BASE DETAIL, SEE STD. 620A.
2. MINIMUM CLEARANCE OF 48-INCHES FROM BACK OF SIDEWALK REQUIRED.

## **CITY OF ROHNERT PARK**

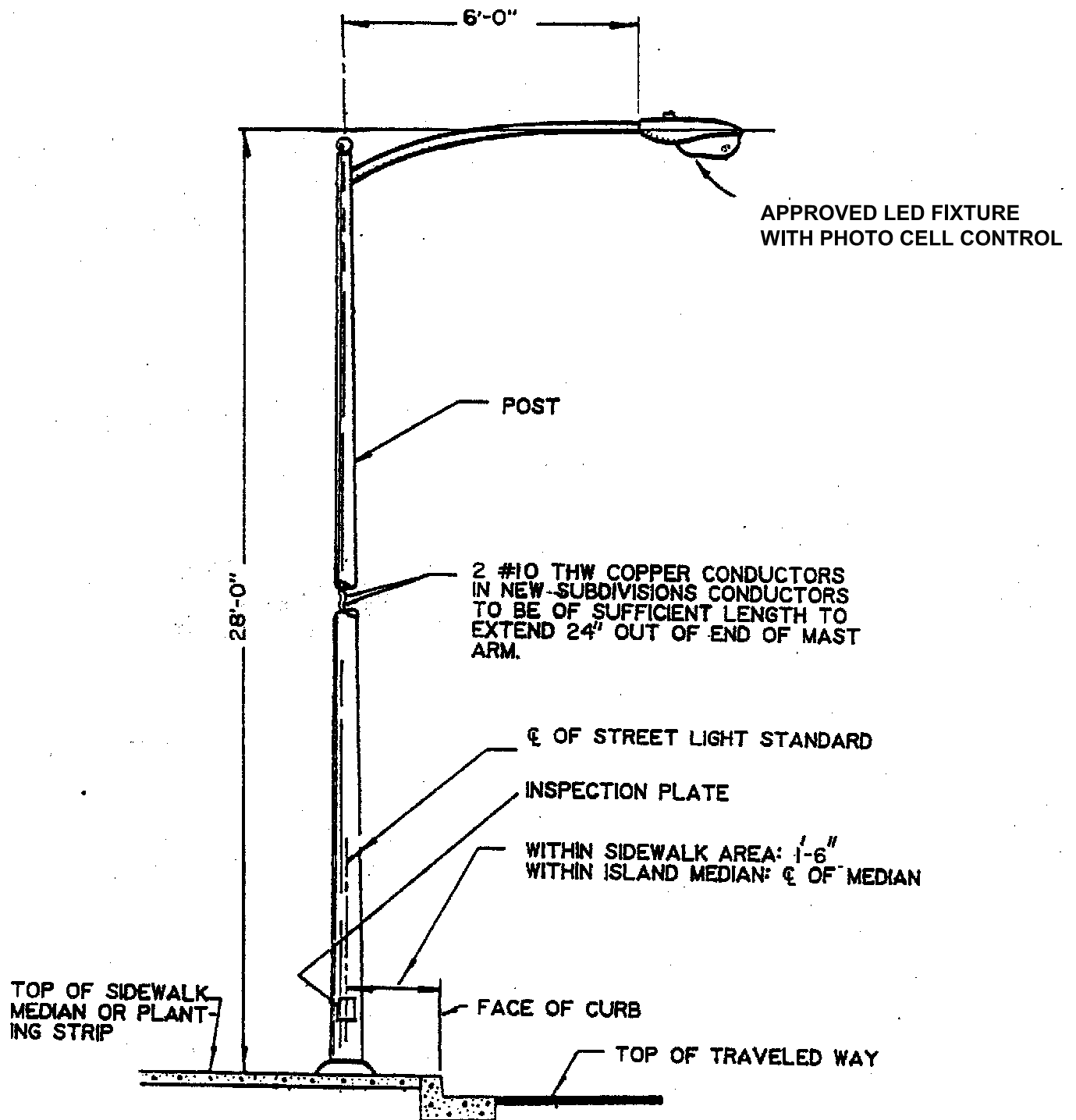
### **STREET LIGHTS MAJOR STREETS COBRA STYLE**

SCALE: NONE

DATE: MARCH 2014

Approved:

**STD. - 610**



# NOTES:

1. FOR BASE DETAIL, SEE STD. 620A.
2. MINIMUM CLEARANCE OF 48-INCHES  
FROM BACK OF SIDEWALK REQUIRED.

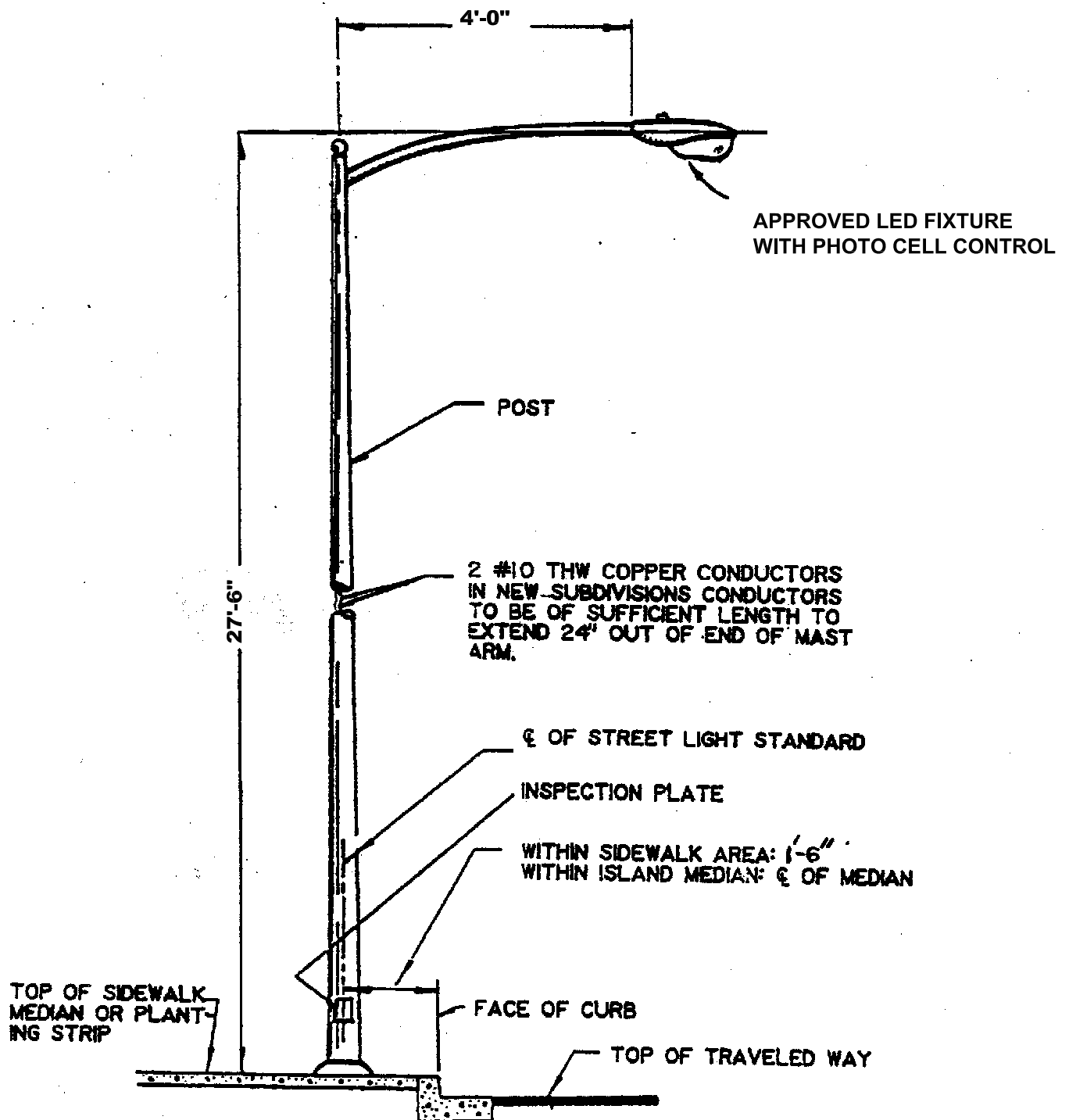
## CITY OF ROHNERT PARK

### STREET LIGHTS COLLECTOR STREETS COBRA STYLE

SCALE: NONE DATE: MARCH 2014

Approved:

STD. - 611



# **NOTES:**

- DESIGN SHALL CONFORM TO THESE REQUIREMENTS EXCEPT AS OTHERWISE APPROVED BY THE CITY ENGINEER BY VARIANCE.
- FOR BASE DETAIL, SEE STD. 620A.

## **CITY OF ROHNERT PARK**

### **STREET LIGHTS MINOR STREETS**

SCALE: NONE

DATE: MARCH 2014

Approved:

STD. - 612

- ① INSTALL HOUSE SIDE SHIELD AS DIRECTED BY THE CITY ENGINEER.
- ② SEE CITY STD 620B AND STD 621 FOR CONCRETE FOOTING DESIGN

## Specifications

Hood:

Spectra SPI by AAL 22"x29.2".

Luminaire Description:

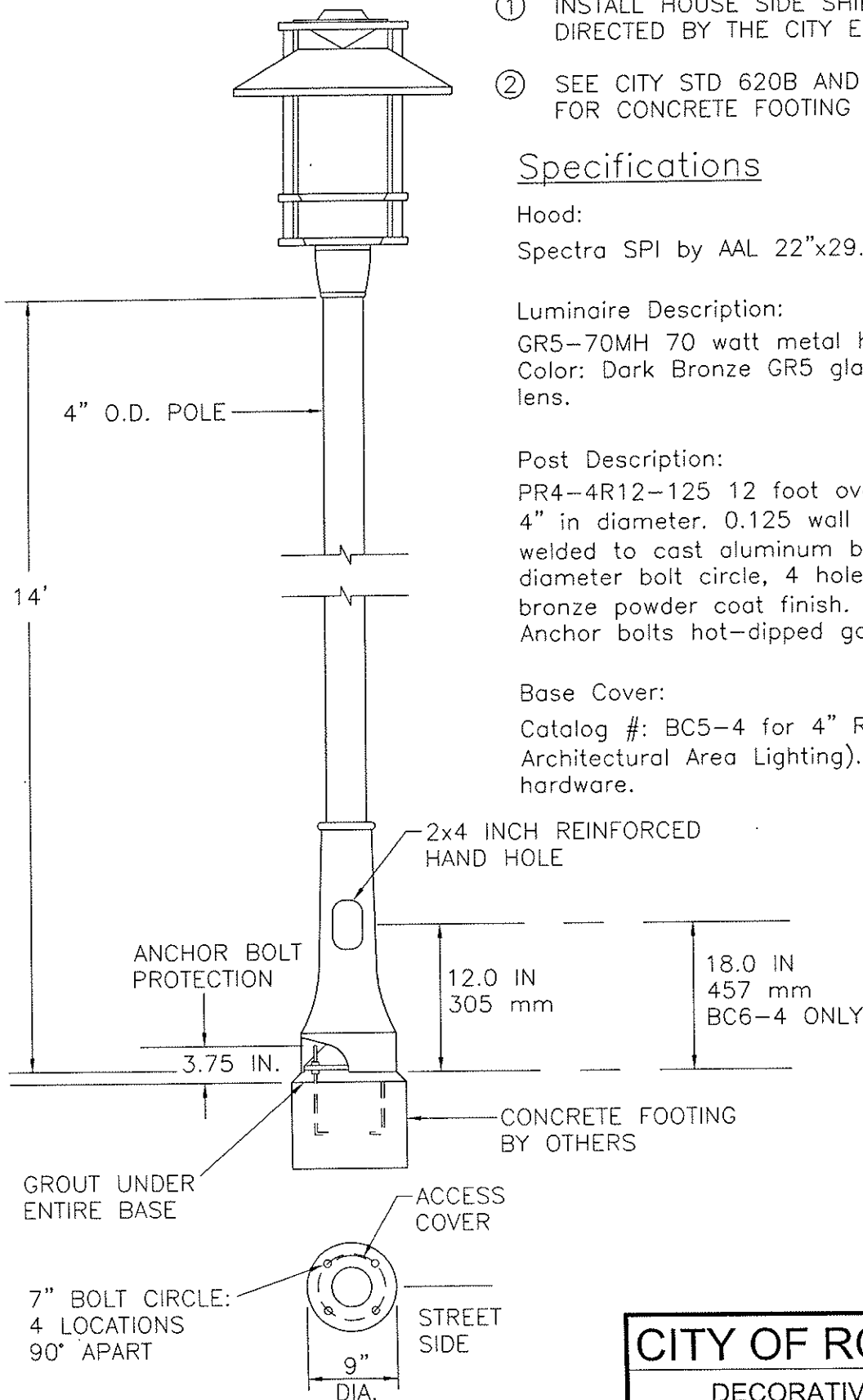
GR5-70MH 70 watt metal halide 277v ballast.  
Color: Dark Bronze GR5 glass refractor type 3 lens.

Post Description:

PR4-4R12-125 12 foot overall height post. Shaft 4" in diameter. 0.125 wall thickness post shaft, welded to cast aluminum base housing. 7" diameter bolt circle, 4 holes 90° apart. Dark bronze powder coat finish. (4) 3/4"x24"x3" Anchor bolts hot-dipped galvanized.

Base Cover:

Catalog #: BC5-4 for 4" Round Pole. (by Architectural Area Lighting). Stainless steel hardware.



BOTTOM VIEW  
(INDICATES POLE IS LAYING DOWN  
WITH HANDLE FACING UP)

## CITY OF ROHNERT PARK

DECORATIVE STREET LIGHTS  
CITY CENTER AREA

SCALE: NONE

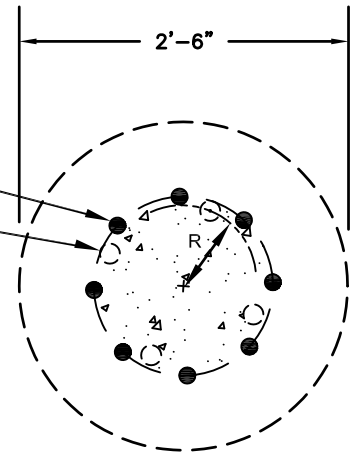
DATE: JANUARY 2006

Approved:

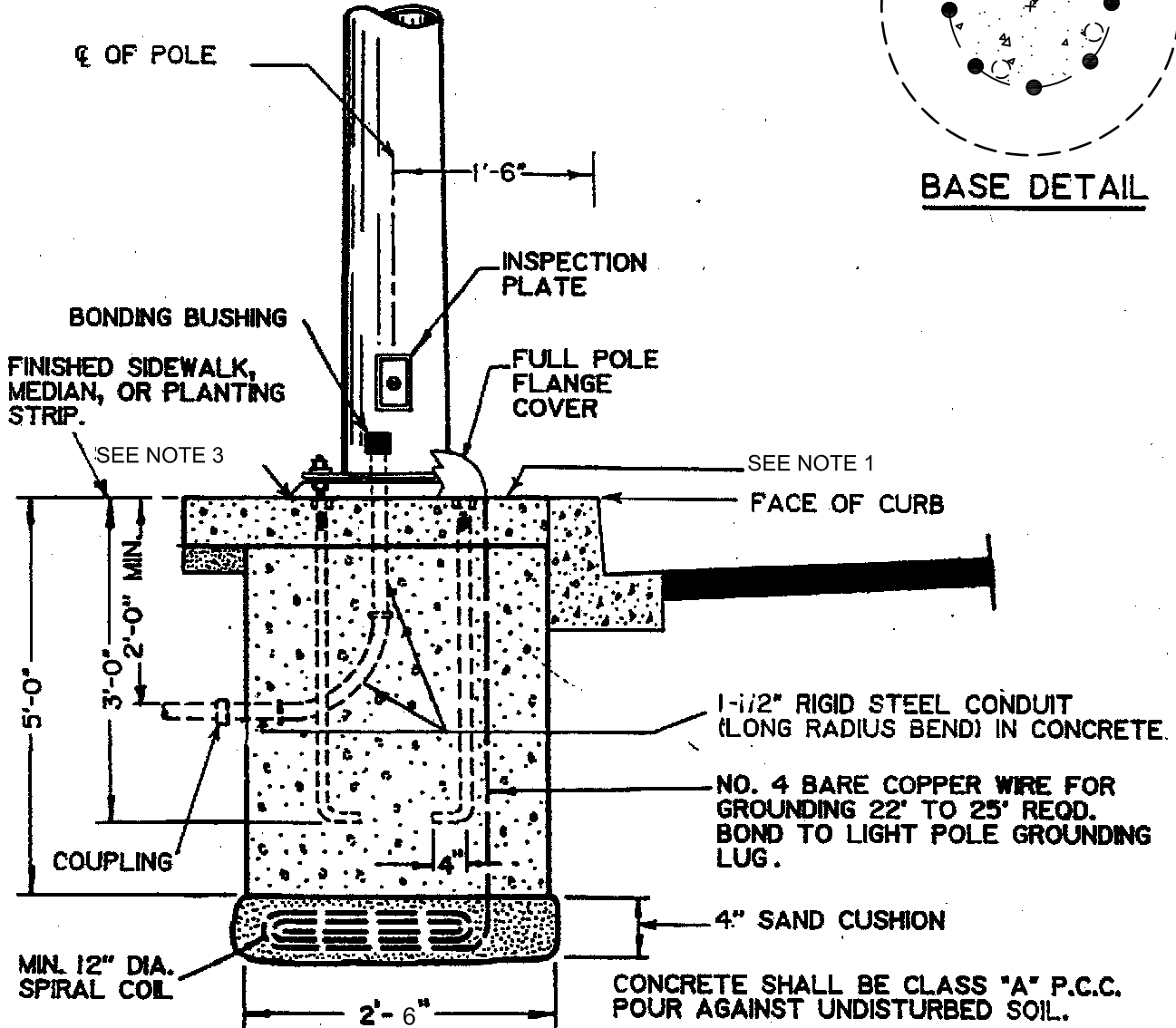
*Damian*

STD. - 618

$R_1$  = ANCHOR BOLT DIA. DIMENSION R AND BOLT PATTERN TO SUIT POLE BASE FURNISHED.



**BASE DETAIL**



**CONCRETE FOOTING**

**NOTES:**

1. IN AREAS WITHOUT CONCRETE AROUND FOOTING, CONSTRUCT A 2'x2' CONC. PAD (4" THICK). IF ROUND FOOTING IS POURED, POUR TO BOTTOM ELEVATION OF THE SIDEWALK.
2. FOUNDATION BOLTS SHALL NOT BE CUT OFF FOR ANY REASON. EXTENSION COUPLERS SHALL NOT BE PERMITTED.
3. LEVELING OF BASE SHALL CONFORM TO THE REQUIREMENTS OF STD. 621.

**CITY OF ROHNERT PARK**

**CONCRETE FOOTING AND BASE DETAIL  
COBRA STYLE STREET LIGHT POLE**

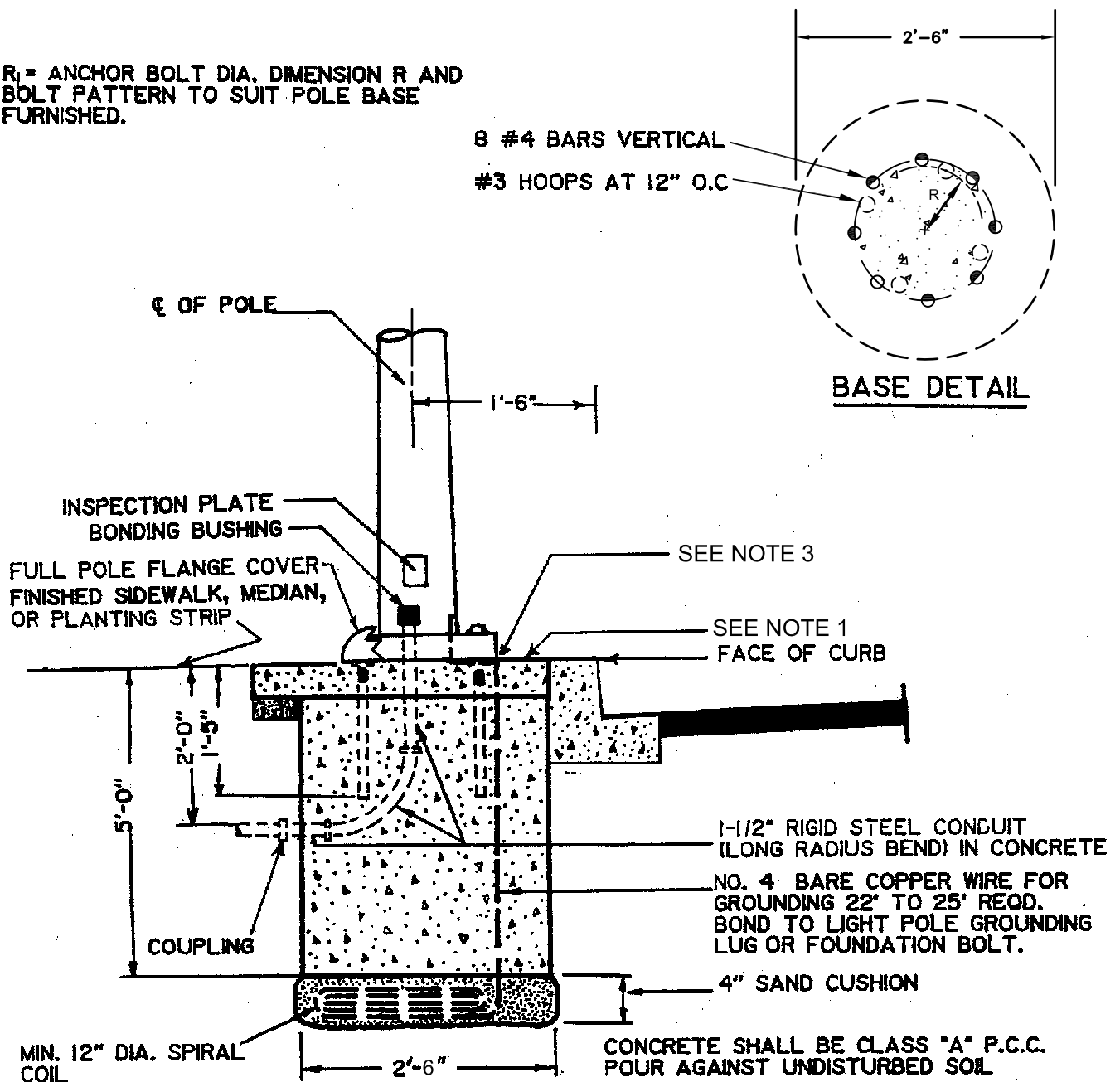
SCALE: NONE

DATE: MARCH 2014

Approved:

STD. - 620A

$R_1$  = ANCHOR BOLT DIA. DIMENSION R AND BOLT PATTERN TO SUIT POLE BASE FURNISHED.



### CONCRETE FOOTING

#### NOTES:

1. IN AREAS WITHOUT CONCRETE AROUND FOOTING, CONSTRUCT A 2'x2' CONC. PAD (4" THICK). IF ROUND FOOTING IS POURED, POUR TO BOTTOM ELEVATION OF THE SIDEWALK.
2. FOUNDATION BOLTS SHALL NOT BE CUT OFF FOR ANY REASON. EXTENSION COUPLERS SHALL NOT BE PERMITTED.
3. LEVELING OF BASE SHALL CONFORM TO THE REQUIREMENTS OF STD. 621.

## CITY OF ROHNERT PARK

### CONCRETE FOOTING AND BASE DETAIL DECORATIVE STREET LIGHT POLE

SCALE: NONE

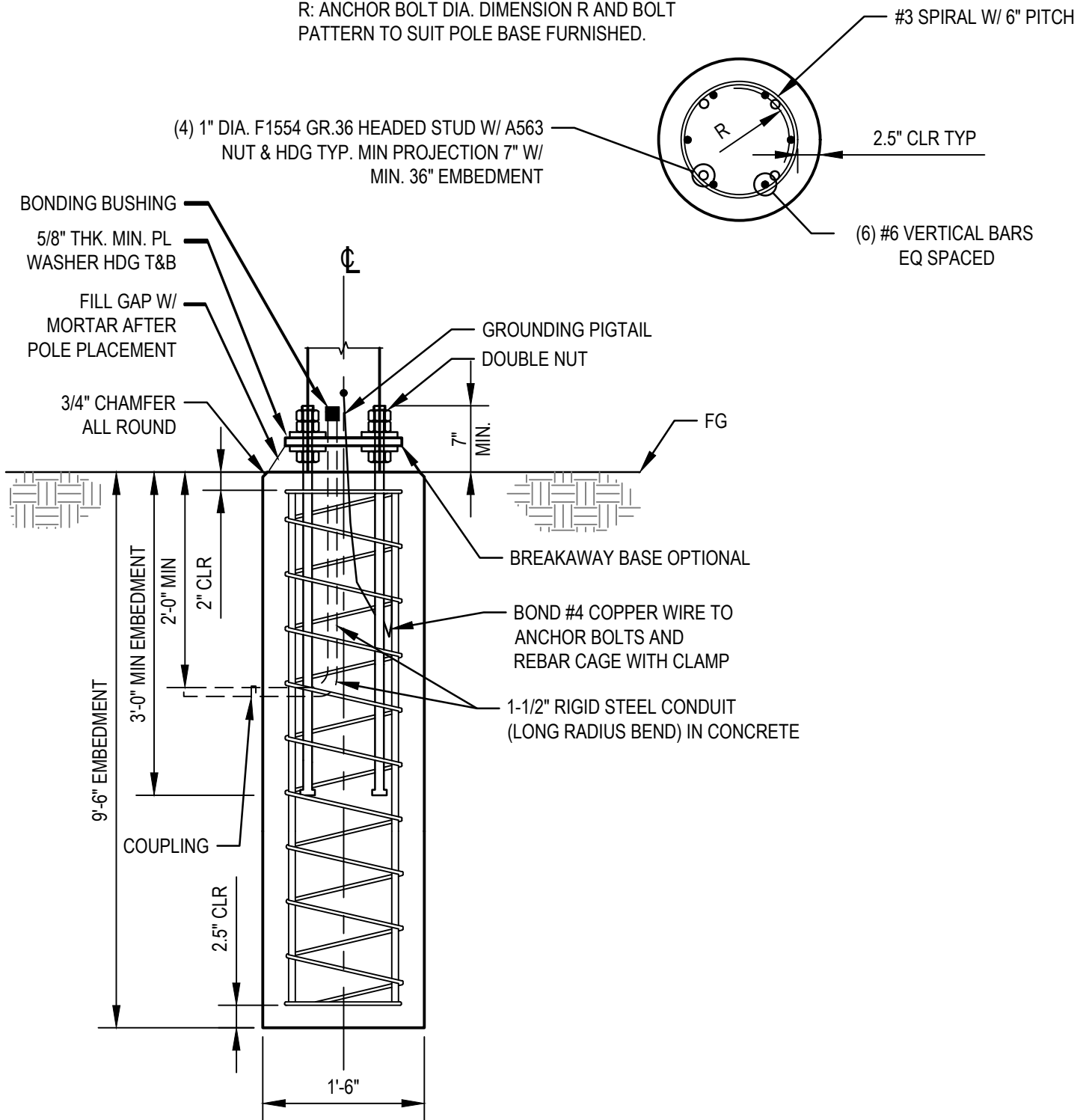
DATE: MARCH 2014

Approved:

STD. - 620B

## Exhibit A-2

R: ANCHOR BOLT DIA. DIMENSION R AND BOLT  
PATTERN TO SUIT POLE BASE FURNISHED.



### NOTES:

1. MAXIMUM HEIGHT OF LIGHT POLE: 32'-6" WITH MAXIMUM ARM LENGTH 8'-0".
2. ADJUST ANCHOR BOLTS TO AVOID CONFLICT WITH VERTICAL BARS.
3. IN AREAS WITHOUT CONCRETE AROUND FOOTING, CONSTRUCT A 2'x2' CONC. PAD (4" THICK). FOR ROUND FOOTING, POUR TC BOTTOM ELEVATION OF THE SIDEWALK.
4. FOUNDATION BOLTS SHALL NOT BE CUT OFF FOR ANY REASON. EXTENSION COUPLERS SHALL NOT BE PERMITTED.
5. LEVELING OF BASE SHALL CONFORM TO THE REQUIREMENTS OF STD. 621.

## CITY OF ROHNERT PARK

18" DIAMETER CONCRETE FOOTING AND BASE PLATE DETAIL  
COBRA STYLE STREET LIGHT POLE

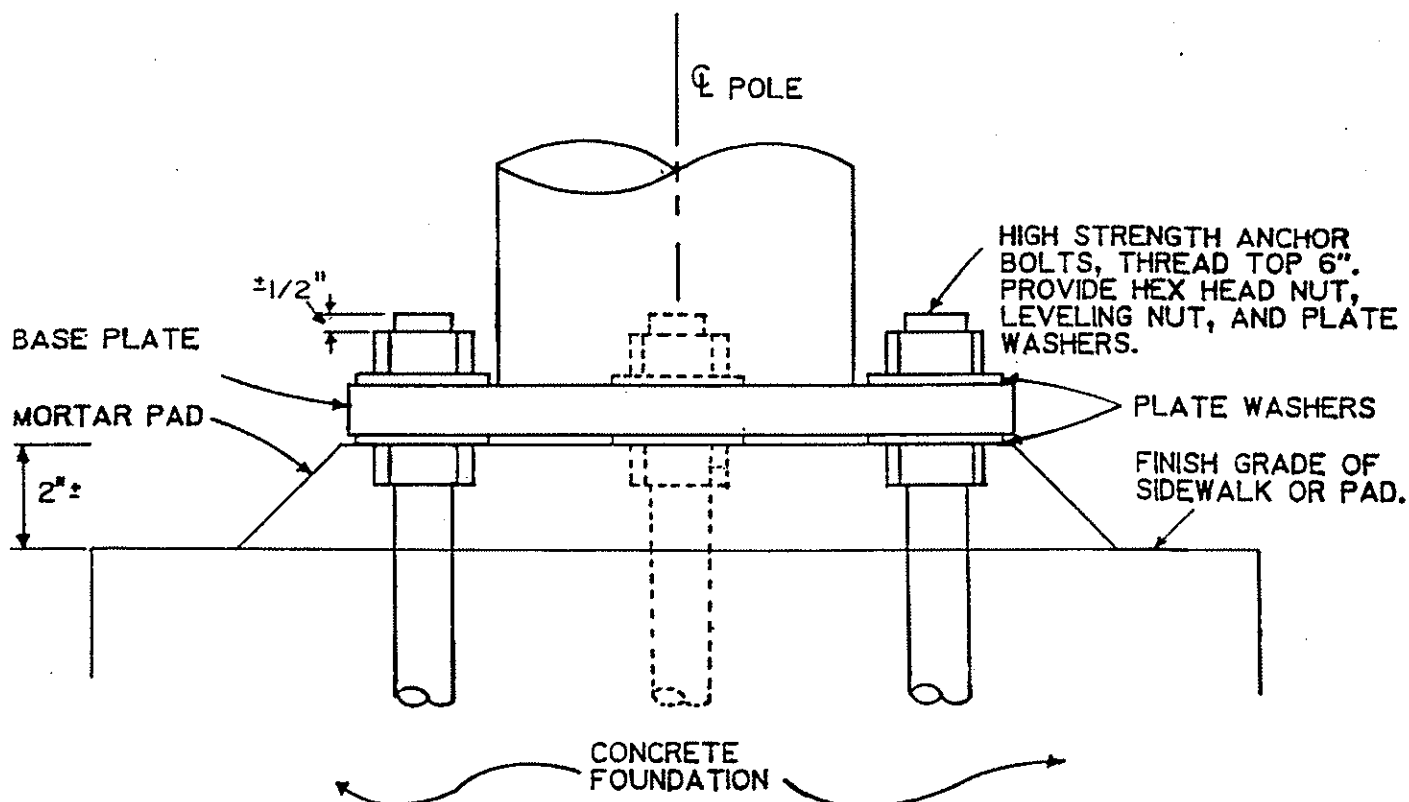
SCALE: NONE

DATE: JUNE 2023

APPROVED:

*Julian De Anda*

STD. - 620C



BASE LEVELING DETAIL

NOTES:

1. FOUNDATION BOLTS SHALL NOT BE CUT OFF FOR ANY REASON  
EXTENSION COUPLERS SHALL NOT BE PERMITTED

**CITY OF ROHNERT PARK**

STREET LIGHTING BASE  
LEVELING DETAIL

SCALE: NONE

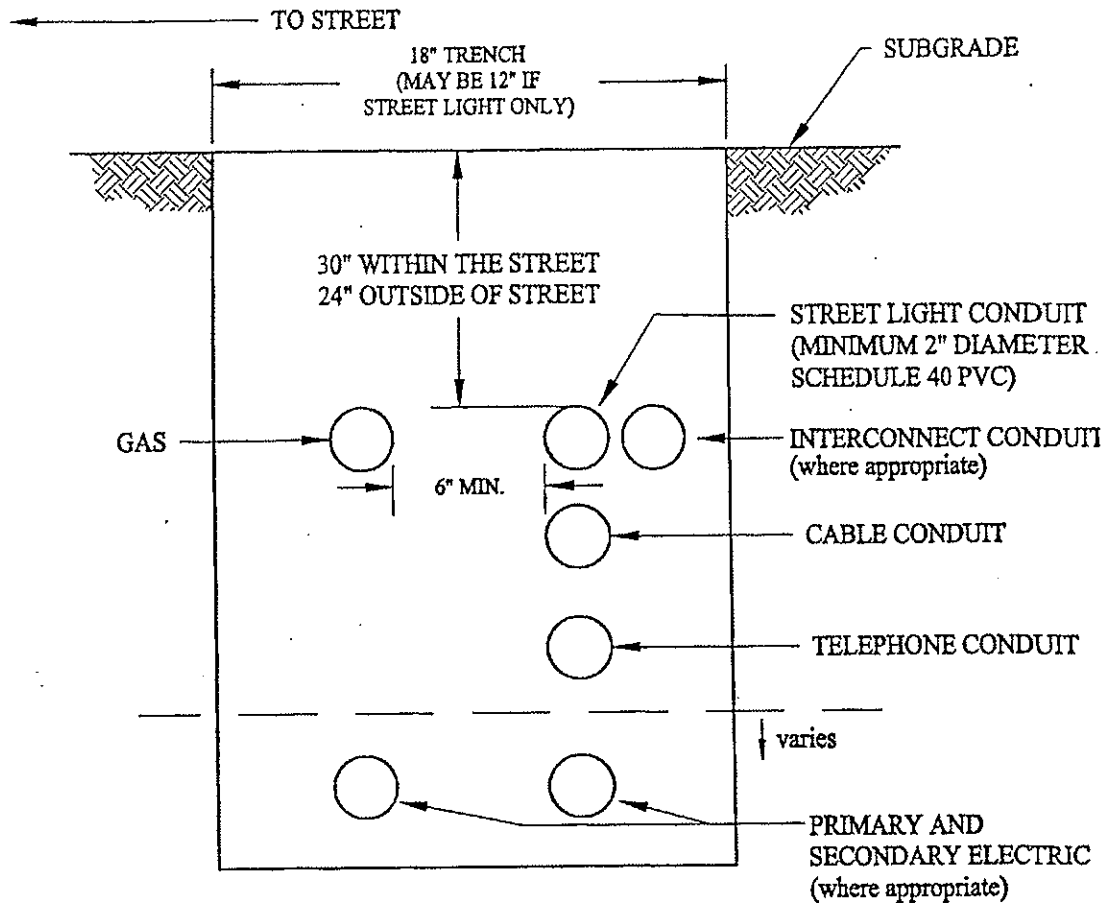
DATE: JANUARY 2006

Approved:

*Dan Sullivan*

STD. - 621





#### NOTES:

1. IF JOINT TRENCH IS USED, THE TRENCH LAYOUT SHALL CONFORM TO THE ABOVE CONFIGURATION, UNLESS OTHERWISE SPECIFICALLY APPROVED BY THE CITY ENGINEER.
2. A RUN OF CONDUIT SHALL NOT CONTAIN MORE THAN THE EQUIVALENT OF FOUR - 1/4 BENDS (360° TOTAL) INCLUDING OFFSETS AND BENDS LOCATED AT PULL BOXES AND SERVICE POINTS (NATIONAL ELECTRIC CODE 347-14).
3. PULL BOXES ARE REQUIRED ON BOTH SIDES OF EACH STREET CROSSING.
4. IF JOINT TRENCH IS USED, COSTS SHALL BE BORNE BY DEVELOPER. JOINT TRENCH DESIGN SHALL BE THE RESPONSIBILITY OF THE DEVELOPER.
5. NO MORE THAN ONE STREET LIGHT CONDUIT IN ANY PG&E SERVICE POINT.
6. PRIOR TO ANY STREET LIGHT CONDUIT CONSTRUCTION, THE CONTRACTOR SHALL PROVIDE 3 COPIES OF THE JOINT TRENCH OR STREET LIGHT CONDUIT PLAN TO THE INSPECTOR AND MEET THE INSPECTOR ON-SITE TO REVIEW STREET LIGHT CONDUIT PLANS & IDENTIFY ALL PULL BOX LOCATIONS & CONDUIT STREET CROSSINGS.
7. REFERENCE THE JOINT TRENCH COMPOSITE OR STREET LIGHT CONDUIT PLANS FOR CONDUIT LOCATION AND CONDUCTOR SCHEDULE.

## CITY OF ROHNERT PARK

### JOINT TRENCH LAYOUT FOR STREET LIGHT CONDUIT

SCALE: NONE

DATE: JANUARY 2006

Approved:

*Donna F. ...*

STD. - 625